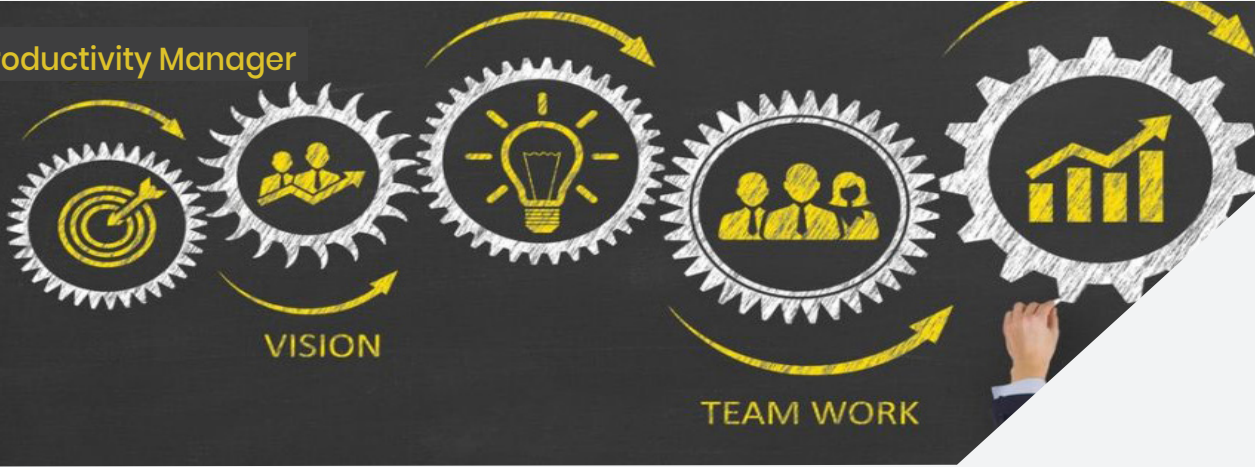


# Productivity Manager



## Manage your Loans, Manage your Employees, & Manage your Business

The Ignite Productivity Manager tracks key loan metrics, system metrics and user metrics and displays them in a dashboard for clear objective reporting. The dashboard displays attributes that are monitored within the course of an Encompass session with drilldown functionality that allows you to manage the finest of details.

The audited data is presented to the user with the ability to drilldown by date, user & field ID which makes the Productivity Manager an incredible tool for any Lender.

### Key Features include:

Examining system performance at various times of the day!

Examining when your employees are most active!

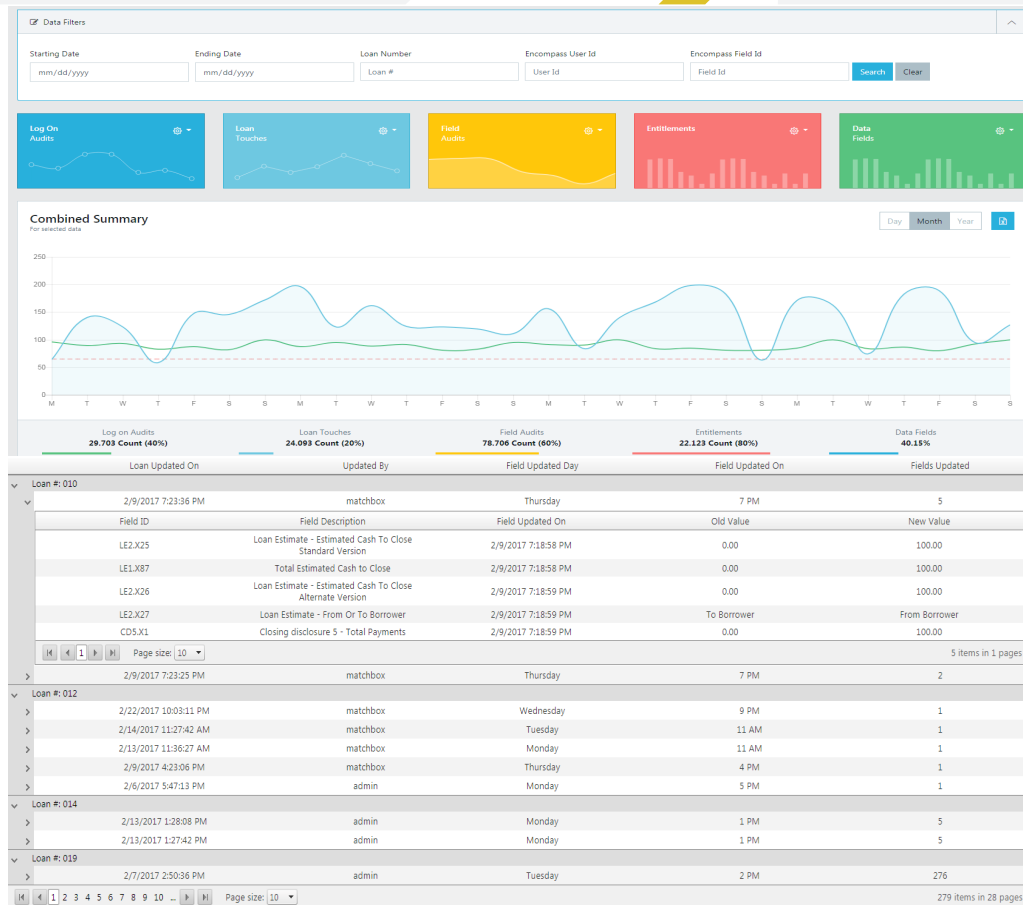
Examining when loan changes are at their peak!

Track who is logging in, logging out or not logging in at all!

Know ALL fields that were changed on a loan, by a user or at a specific time!

Know how many loans are being 'touched' by a given user & compare the data to other user's productivity!

Track overtime or compensation based on users logged sessions.



For more information, or to schedule a demo contact:

Frank Fiore, Vice President t: 516.802.7170 c: 516.236.6711

100 Crossways Park West, Suite 216 | Woodbury, NY 11797